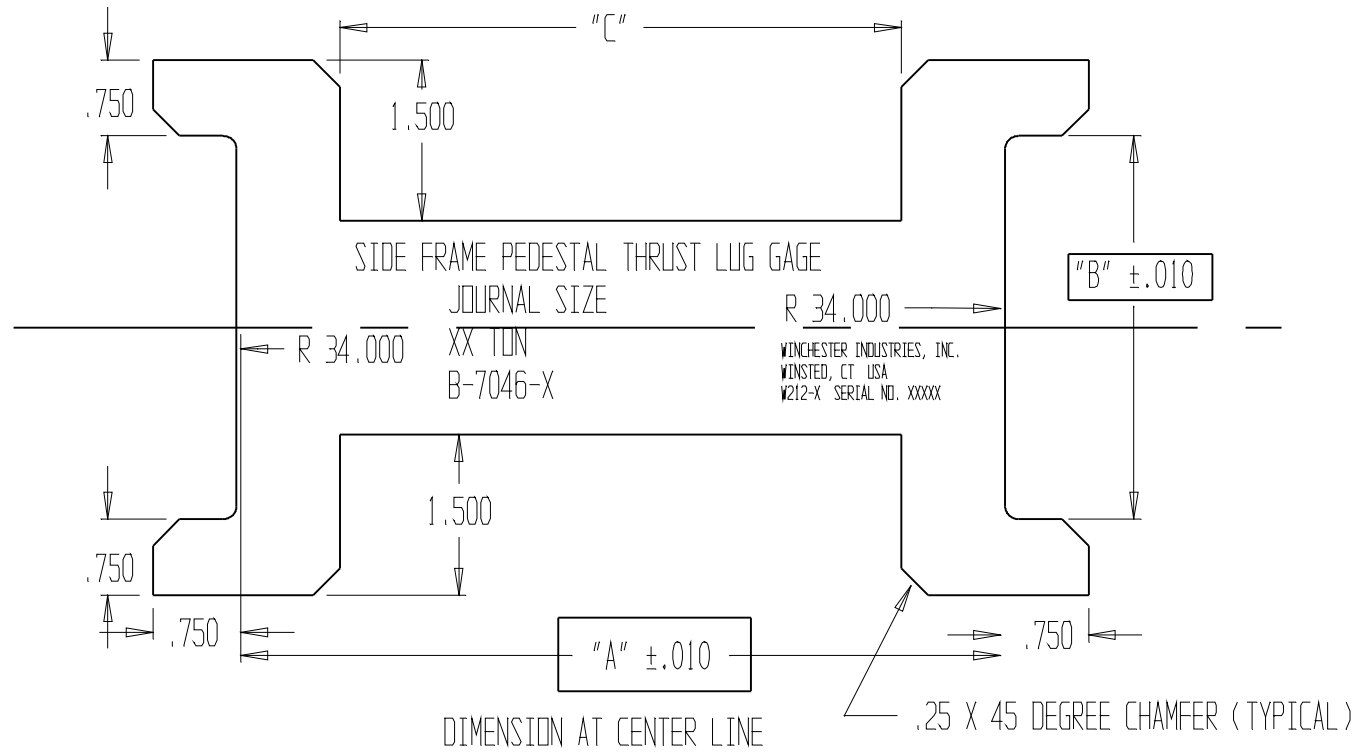


BOXED DIMENSIONS ARE MINIMUM  
 CHARACTERISTICS TO BE VERIFIED  
 FOR RECERTIFICATION  
 RECERTIFICATION TOLERANCE +/- .020"  
 REFERENCE:  
 AAR D MANUAL M-214

REFERENCE:  
 TTX DRAWING B-7046 REV G  
 AAR D MANUAL  
 RP-321-91



TOLERANCE UNLESS  
 OTHERWISE SPECIFIED +/- .031"

Material:  
 Stainless Steel  
 Thickness .125"

Scale .5X

GAGE	DETAIL	SIZE	TYPE	"A"	"B"	"C"
W212-1	B-7046-1	6 X 11	70 TON	7.213	3.588	5.250
W212-2	B-7046-2	6 1/2 X 12	100 TON	7.713	3.588	5.750
W212-3	B-7046-3	7 X 12	125 TON	8.713	3.838	6.750
W212-4		5 1/2 X 10	50 TON	6.211	2.711	4.250
W212-5		SCL SPECIAL PER WATCO		10.625	4.625	8.664

WINCHESTER INDUSTRIES INC.					
PEDESTAL THRUST LUG GAGE					
SIZE A	Job#	DWG NO. W212	Disk	REV F	
CUSTOMER WINCHESTER			ENG JCD 09/01/2010		