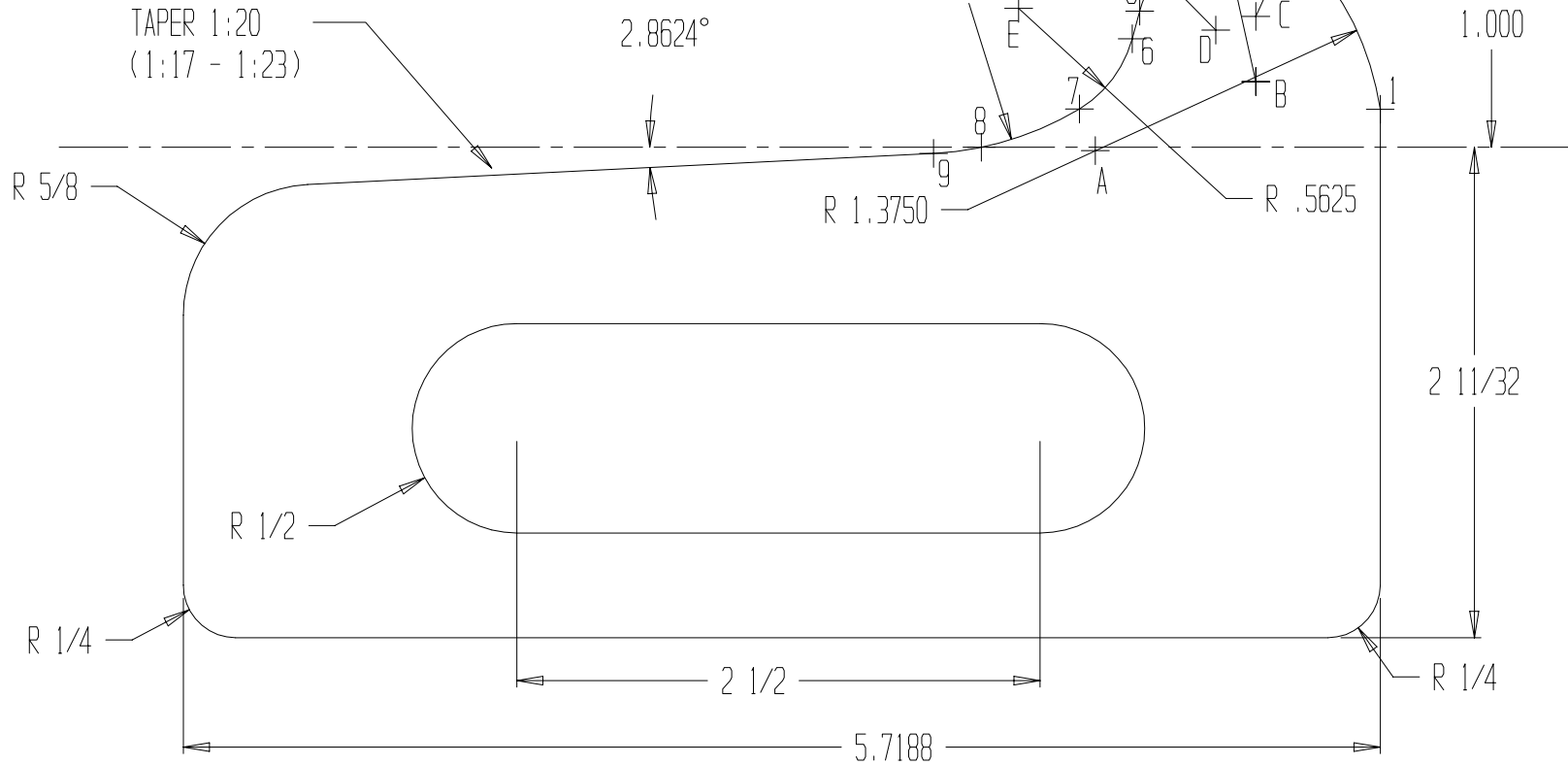


CENTERS OF RADII
RELATIVE TO GAGE POINT

- A (-.2044, -0.6418)
- B (0.5625, -0.3125)
- C (0.5625, -0.0000)
- D (0.3706, -0.0659)
- E (-0.5720, 0.0387)
- F (-1.0520, 0.8440)



INTERSECTION POINTS
RELATIVE TO GAGE POINT

- 1 (1.1563, -0.4440)
- 2 (0.8531, 0.2370)
- 3 (0.5625, 0.3750)
- 4 (0.1319, 0.2234)
- 5 (0.0068, 0.0255)
- 6 (-0.0269, -0.1067)
- 7 (-0.2804, -0.4423)
- 8 (-0.7487, -0.6250)
- 9 (-0.9771, -0.6541)

REFERENCE:
AAR G MANUAL
Figure 12
AAR-1B NARROW FLANGE CONTOUR
FOR FREIGHT CAR WHEELS
Standard Adopted 1991

VERIFY WITH CONTOUR MAPPING
MAX MANUFACTURE DEVIATION: .003"
MAX RECERTIFICATION DEVIATION: .005"

Material:
Stainless Steel
Hardened

Scale: 1X

WINCHESTER INDUSTRIES INC.

AAR-1B NARROW FLANGE CONTOUR

SIZE A	Job#	DWG NO. W670	Disk	REV B
-----------	------	-----------------	------	----------

CUSTOMER | ENG JCD 03/01/97